

An ammeter is used to measure current.

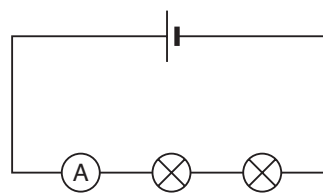
P

Apparatus

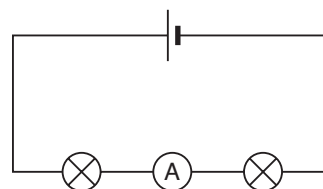
- Cells/power pack
- Two bulbs
- Ammeter
- Connecting wires

Method

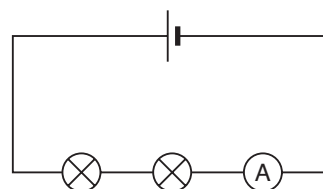
- 1 Build this circuit. Show it to your teacher before you switch on.
Write down the reading on the ammeter.



- 2 Now build this circuit.
Write down the reading on the ammeter.



- 3 Build this circuit and write down the ammeter reading.



Considering your results/conclusion

Copy these sentences and fill in the gaps using words from the box. You may need some words more than once.

The reading on the _____ shows the amount of _____ flowing around the _____.

The current is the _____ everywhere in the _____. The current is not _____ by the bulbs.

ammeter

circuit

current

same

used up

S

observing, considering